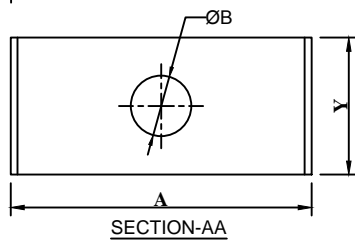


**NOTES:**

FLANGE	ANSI B 16.5
DESIGN STANDARD	BS5351
TESTING STANDARD	API - 598 & 6755 PART - 1



\* Mounting Dimension

SIZE	A	Y	ØB	H	h	W	ØD	*C
25	140	75	45	30	9	9	14	20
40	87	87	45	40	13.5	16.5	22	21
50	145	120	55	88	18	18	24	29
80	140	140	60	59	27	21.3	28	31

\*\*\*C-Approximate

Size	Pr.CLASS	F-F	FØ	F.T	RFØ	RFT	P.C.D	NOH	HOLESØ
------	----------	-----	----	-----	-----	-----	-------	-----	--------

25	150#	127	108	11	51	3	79	4	16
40	150#	165	127	14.3	73	3	98	4	16
50	150#	178	152	16	92	3	121	4	19
80	150#	203	190	19	127	3	152	4	19

\*\*\*Due to Super seat tolerance will be +2 to 6mm acc. to size

12	Mounting Bracket	MILD STEEL
11	Static Eliminator	AISI 304
10	Fasternes	ASTM A193 Gr.B7 & ASTM A194 Gr.2H
09	Gland push	AISI 304
08	Lining	PFA
07	Chevron Packing	PTFE
06	Gland Box	ASTM A395 Gr.DUCTILE IRON
05	Stem Bearing	PFA
04	Seat Ring	PTFE
03	Ball with integral Stem	ASTM A395 Gr.DUCTILE IRON
02	Body End	ASTM A395 Gr.DUCTILE IRON
01	Body	ASTM A395 Gr.DUCTILE IRON

**BILL OF MATERIAL**

PO. NO. & DATE:

CLIENT :

	NAME	DATE	SIGN
DRAWN	VIJAY	21.02.2017	<i>[Signature]</i>
CHECKED	K.K.M	21.02.2017	<i>[Signature]</i>
APPROVED	RAVI	21.02.2017	<i>[Signature]</i>

**RASAI FLOW LINES PVT. LTD.**  
15D/2, Sipcot Complex  
Pudukottai - 622 002

ISO 9001-2008

TITLE:-  
2-WAY LINED BALL VALVE ASSLY  
WRENCH CLASS150#



All Dimensions are in mm

DRG NO :170221C

REV:	DATE	DETAILS OF REVISION	REVISED BY	APPROVED